

THE RETREATS AT BROWNING CREEK

Close to MSU and Starkville, but Miles from Ordinary



Each Lot \$17,000. Retreat Lots 258, 262.

Some of the last remaining retreat lots on site! These 4 available lake view lots at The Retreats at Browning Creek are the perfect spot out of town. Whether you are looking for a weekend home close to MSU, yet away from the hustle and bustle of city life; or if a permanent Starkville home on an affordably priced lot is what you are after - look no further! Enjoy lake privileges with boathouse, pavilion, and beach on this private neighborhood lake and take up fishing, boating, or swimming. HOA fees and covenants to apply. Each lot is approximately 30 x 129 +/- feet. The homes and grounds that make up The Retreats at Browning Creek were modeled after the quaint, and historic cabins of the Neshoba County Fair. With too many features to name, you just have to come see it for yourself! ***Directions:*** Travel south on Blackjack Road, keep right at round-about to Oktoc Road, drive south 7 miles. Turn left into Browning Creek, going through the gates; drive .5 miles, then take a left at the 2nd entrance into the Retreats. Lots 257, 258, 261, and 262 are down the hill on the right overlooking the lake.



KASS GREEN, REALTOR®

Kass@TomSmithHomes.com
662.268.6333 office | 601.480.0253 cell
135 Jefferson Street | Starkville, MS 39759



Expect More. Get More.

call us today!



CHRISTINA LUCAS, REALTOR®

Christina@TomSmithHomes.com
662.268.6333 office | 662.769.7607 cell
135 Jefferson Street | Starkville, MS 39759

TomSmithLandandHomes.com

Information is believed to be accurate but not guaranteed.



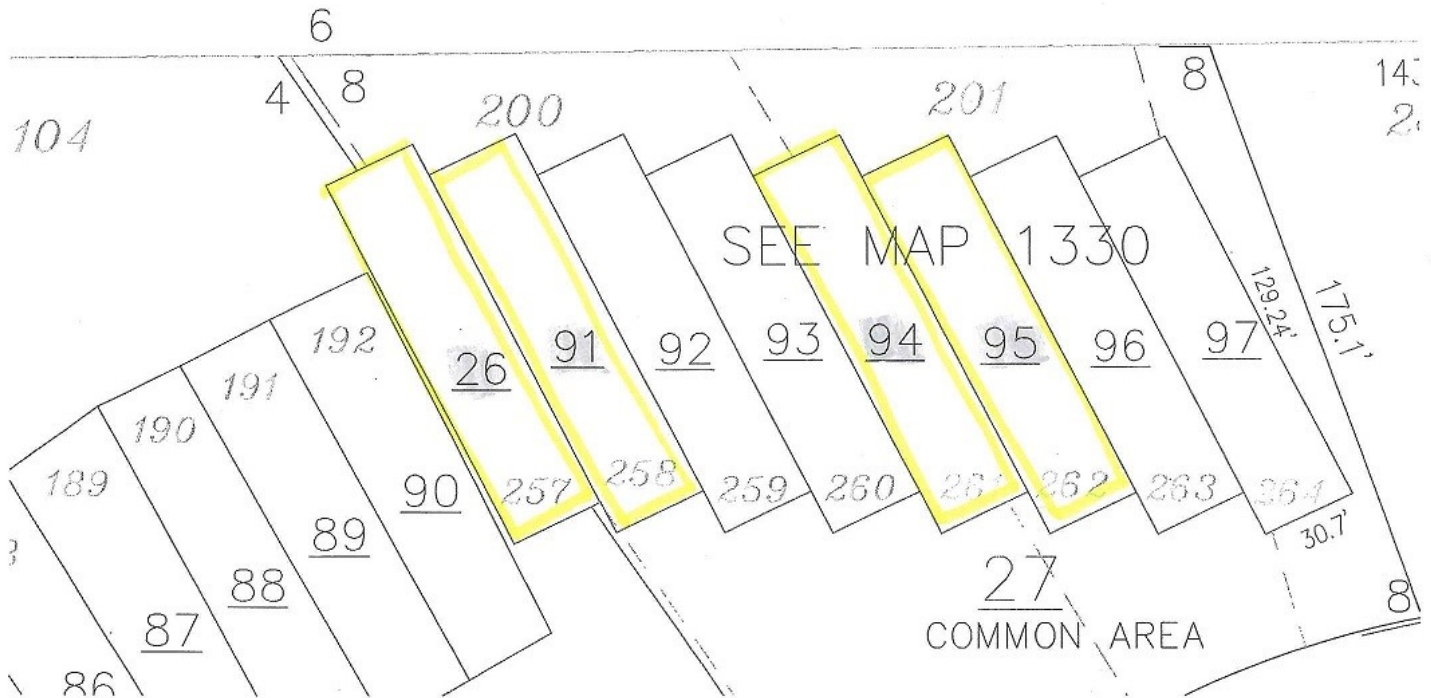
THE RETREATS AT BROWNING CREEK

Close to MSU and Starkville, but Miles from Ordinary

Retreat Lots 258, and 262.

See Highlighted Areas.

Each Lot is 30 x 129 +/- feet.



Expect More. Get More.

call us today!



KASS GREEN, REALTOR®
Kass@TomSmithHomes.com
662.268.6333 office | 601.480.0253 cell
135 Jefferson Street | Starkville, MS 39759

CHRISTINA LUCAS, REALTOR®
Christina@TomSmithHomes.com
662.268.6333 office | 662.769.7607 cell
135 Jefferson Street | Starkville, MS 39759

TomSmithLandandHomes.com

Information is believed to be accurate but not guaranteed.



Ariel View of Retreat Lots 258, and 262. For Illustrative Purposes Only.



Information is Believed to be Accurate but not Guaranteed

Imagery ©2015 Google, Map data



Expect More. Get More.

call us today!

KASS GREEN, REALTOR®
 Kass@TomSmithHomes.com
 662.268.6333 office | 601.480.0253 cell
 135 Jefferson Street | Starkville, MS 39759

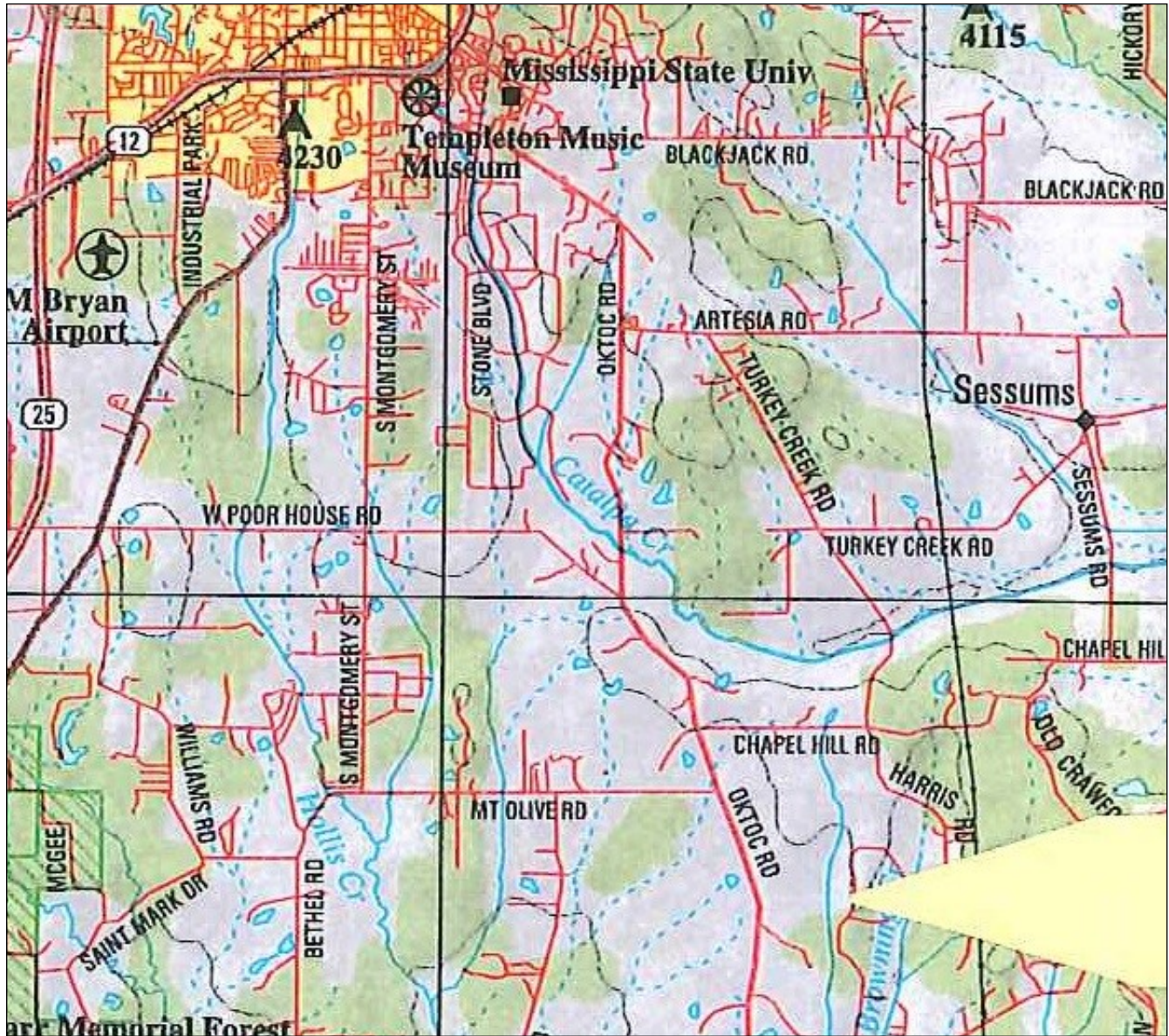


CHRISTINA LUCAS, REALTOR®
 Christina@TomSmithHomes.com
 662.268.6333 office | 662.769.7607 cell
 135 Jefferson Street | Starkville, MS 39759

TomSmithLandandHomes.com

Information is believed to be accurate but not guaranteed.





The Retreats at Browning Creek, Starkville, Mississippi 39759
 Directions: Travel south on Blackjack Road, keep right at round-about to Oktoc Road, drive south 7 miles. Turn left into Browning Creek, going through the gates; drive .5 miles, then take a left at the 2nd entrance into the Retreats. Lots 258, and 262 are down the hill on the right.



Expect More. Get More.

call us today!

KASS GREEN, REALTOR®
 Kass@TomSmithHomes.com
 662.268.6333 office | 601.480.0253 cell
 135 Jefferson Street | Starkville, MS 39759

CHRISTINA LUCAS, REALTOR®
 Christina@TomSmithHomes.com
 662.268.6333 office | 662.769.7607 cell
 135 Jefferson Street | Starkville, MS 39759



TomSmithLandandHomes.com

Information is believed to be accurate but not guaranteed.

